

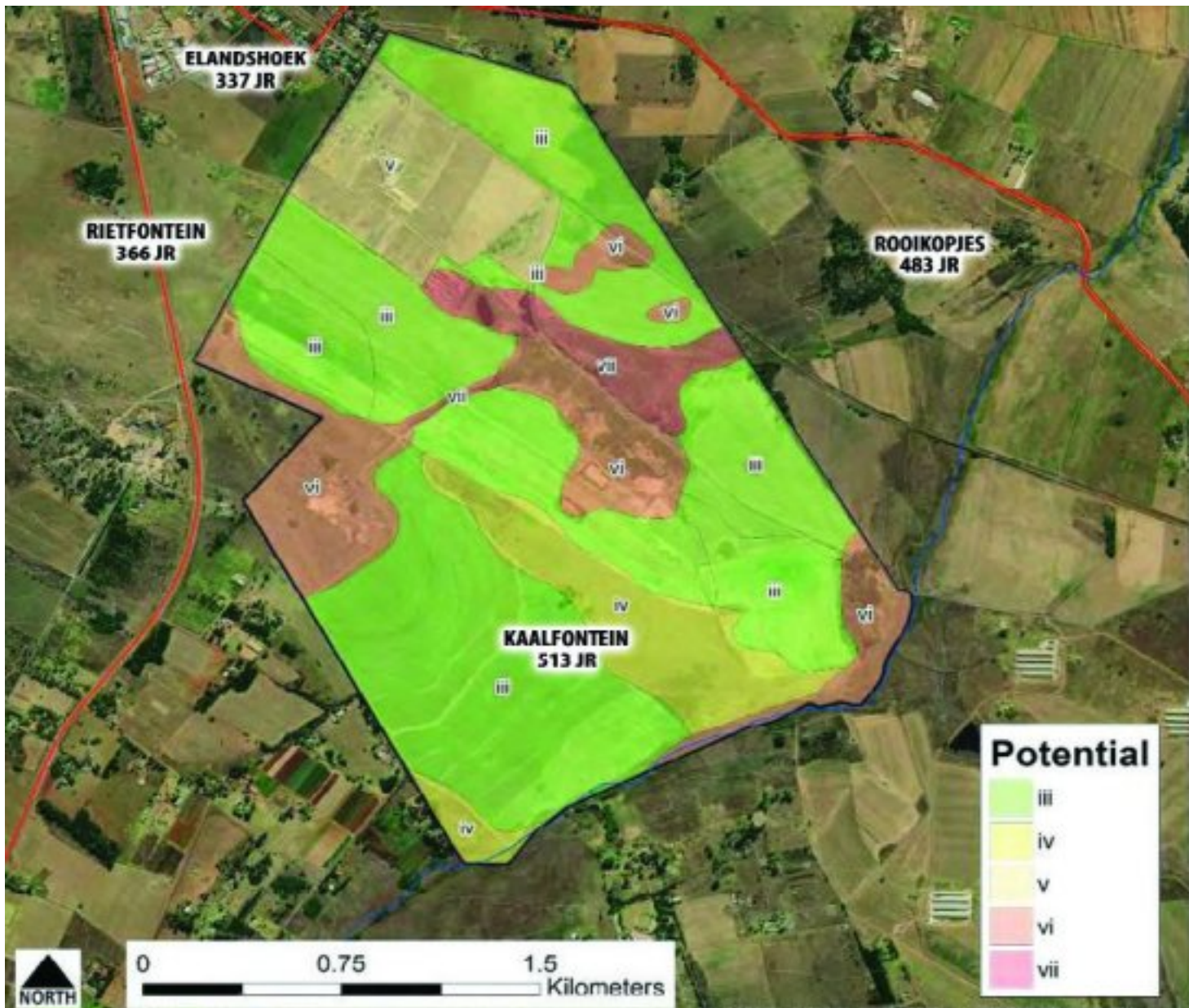
Untitled Document

You have until 12 December to comment on the draft environmental impact assessment report (EIAR) a

Insite Trading (Pty) Ltd is applying for a mining right in terms of the Minerals and Petroleum Resou

The application area is 505,2 ha. There are existing excavations on the property, which was previo

Sufficient sand resources were identified to apply for a mining right on 308 ha. A portion of this lan



Kaalfontein portions 7, 9 and 55 with the town of Rayton to the north, Rietfontein to the west and F

One of the studies includes a map that indicates the study area's current land use capability. It sta
205,6 ha with very low potential or none.

A scoping report was accepted by the Department of Minerals and Energy and members of the pu

You can also request a CD from the public participation officer, Fransis de la Rosa, at Diphororo D

Say your say about sand mine next to Rayton

Tuesday, 10 December 2019 07:51

For more information phone the environmental assessment practitioner, Eugene Gouws from Index,